

Full-time study programme

Level 1 Caring for Children

Do you dream of a career in childcare? This course is designed for individuals like you who are eager to gain the necessary skills to achieve their goals.

This course covers various topics, such as the growth and development of young children, and how to provide engaging activities that aid in a child's development. Additionally, you will acquire personal learning skills, an understanding of equality, health and safety measures, and effective communication techniques.

You will cover the following topics:

- Confidence building for young children through play
- Growth and development of young children
- Sharing learning experiences with children
- Human growth and development
- Respecting and valuing children
- Children's play and leisure activities in the community
- Supporting babies to play
- Craft activities for young children
- Musical activities for young children
- Practical health and safety when with young children
- Finding out about Forest Schools
- Understanding learning and development through play
- Contribute to own healthy living
- Healthy eating for families
- Exploring a vocational area for own development
- Maths and English (if required)
- Preparing for your next steps.

Course Details



Delivery:

Face-to-face. Maximum 12 students per class.



Location:

Nottingham city centre



Duration:

Three days a week. The course will last one academic year and take place during term time only.



Start date:

September



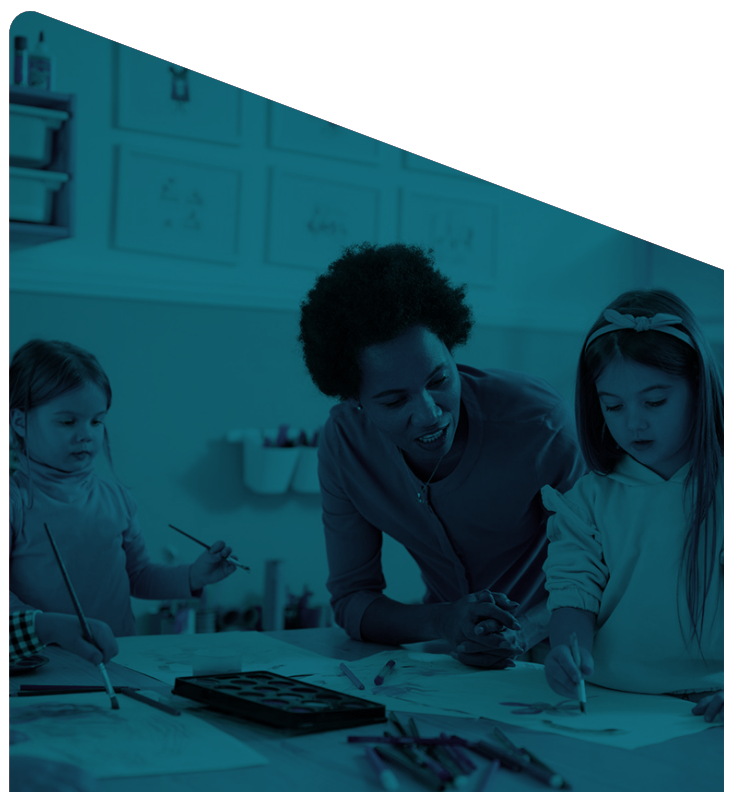
Age requirements:

You must be under 19 on 31 August and not in full-time education.



Teaching and assessments:

Case studies and coursework.



Why Choose Access Training?

Access Training was founded in Nottingham in 1983, and is the independent training provider of choice in the East Midlands.

- We have an excellent record of progressing learners onto Apprenticeships or into employment
- We provide a comfortable, supportive learning environment
- We limit class sizes to a maximum of 12 students
- We provide food and kitchen facilities
- Discounted travel passes are available (depending on circumstances).



We will provide you with a high level of guidance and support enabling you to achieve your potential.



100% Learner recommended rate



94% Learner success rate



1,000+ Learners supported every year

Frequently asked questions

Take a look at our [study programme brochure](#) to read our frequently asked questions and discover more about the courses we offer.

How to apply

Contact our Engagement team and we will guide you through the application process.

ENQUIRE NOW



0330 002 6266



info@atem.co.uk



www.atem.co.uk